

Reach-Wide Geomorphology and Vegetation Monitoring

PRRIP TAC

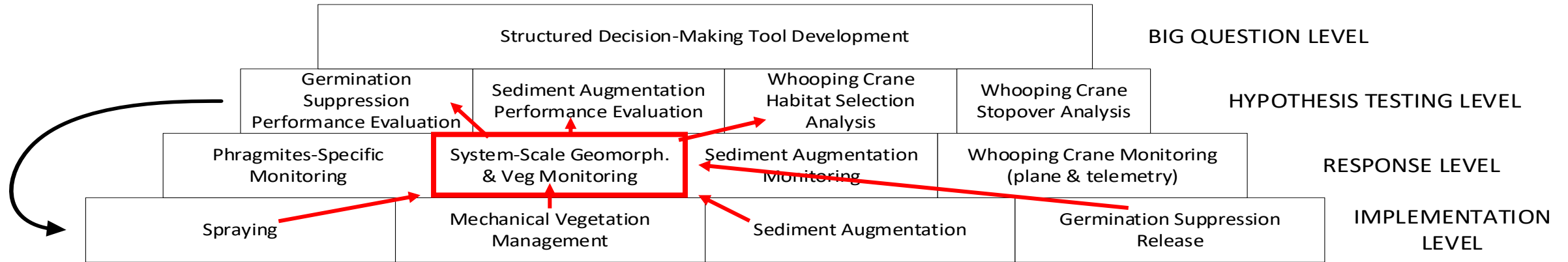
April 2022

Julia Grabowski

Reach-Wide Monitoring Goals

- Document annual changes in habitat conditions
- Report sections
 - Mechanical Management
 - Hydrologic Analysis
 - Hydrodynamic Modeling
 - Land Cover Classification
 - Volume Change Analysis
 - Suitable Whooping Crane Roosting Habitat
 - Emerging Issues
- Provide data needed to answer Big Questions

Science Plan Strategy



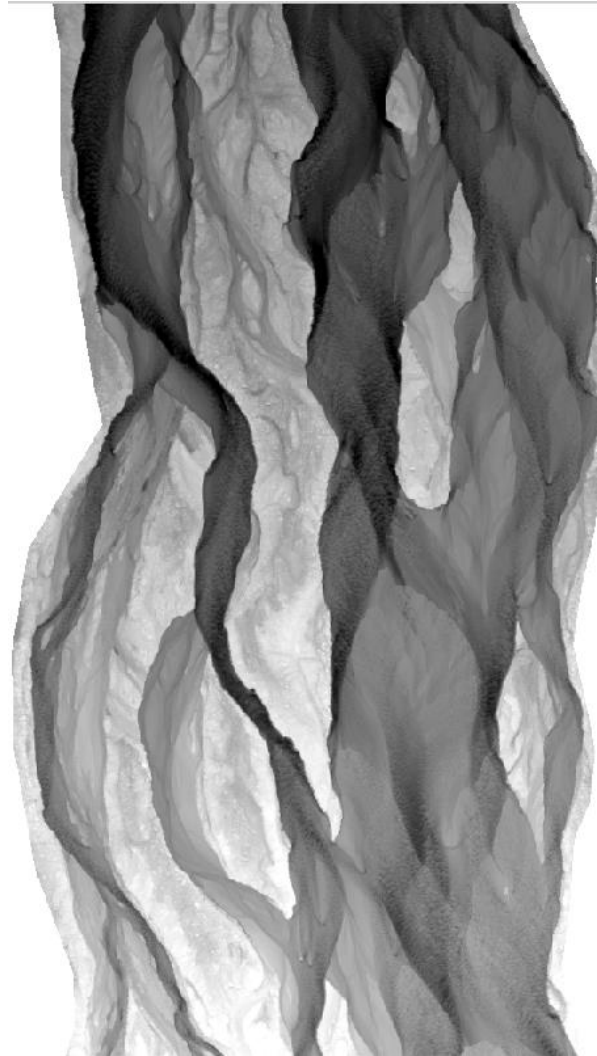
- EBQ # 1 – How effective is it to use Program water to maintain suitable whooping crane roosting habitat?
- EBQ #2 – How effective is Program management of *Phragmites* for maintaining suitable whooping crane roosting habitat?
- EBQ #3 – Is sediment augmentation necessary to create and/or maintain suitable whooping crane roosting habitat?

Remote Sensing Methods: 2017-

Aerial imagery



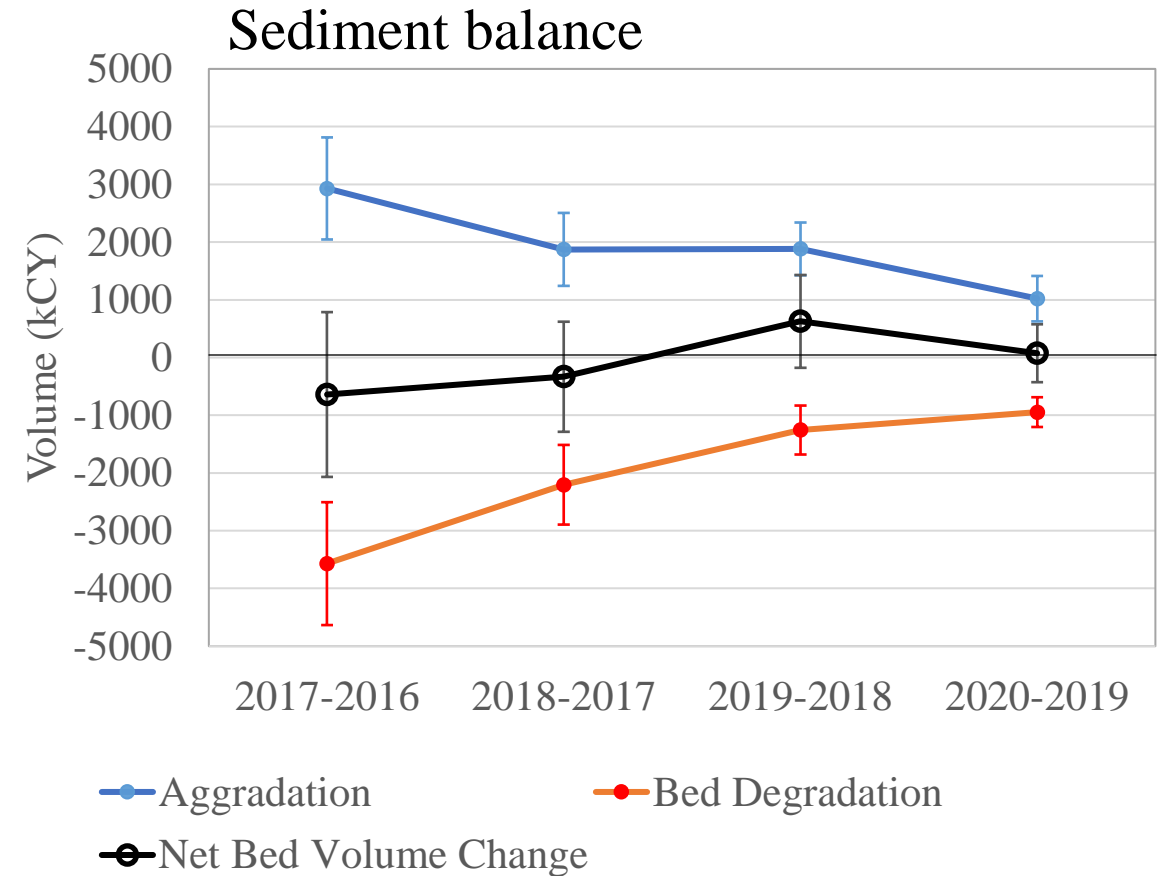
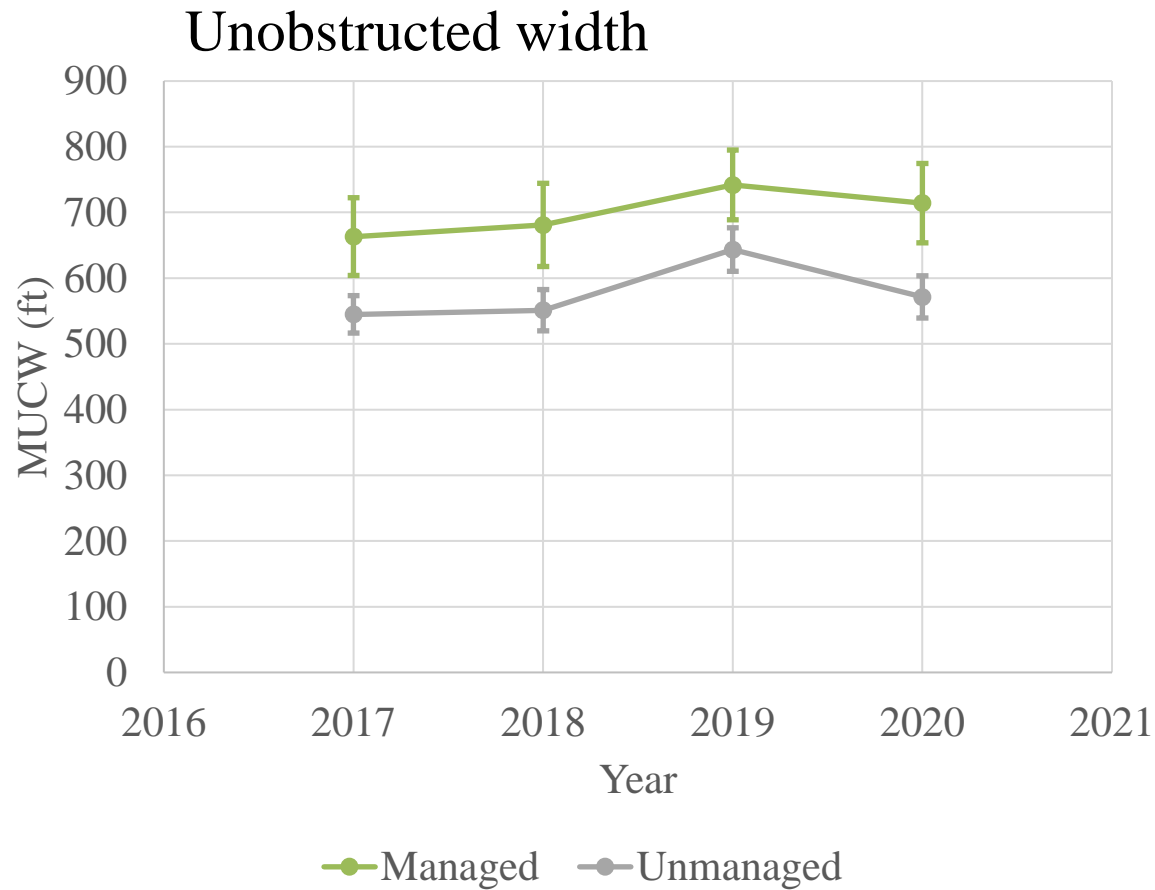
LiDAR – Bare Earth / Bathymetry



LiDAR – Vegetation Height



Results: 2017-2020





Questions?

Julia Grabowski

grabowskij@headwaterscorp.com